

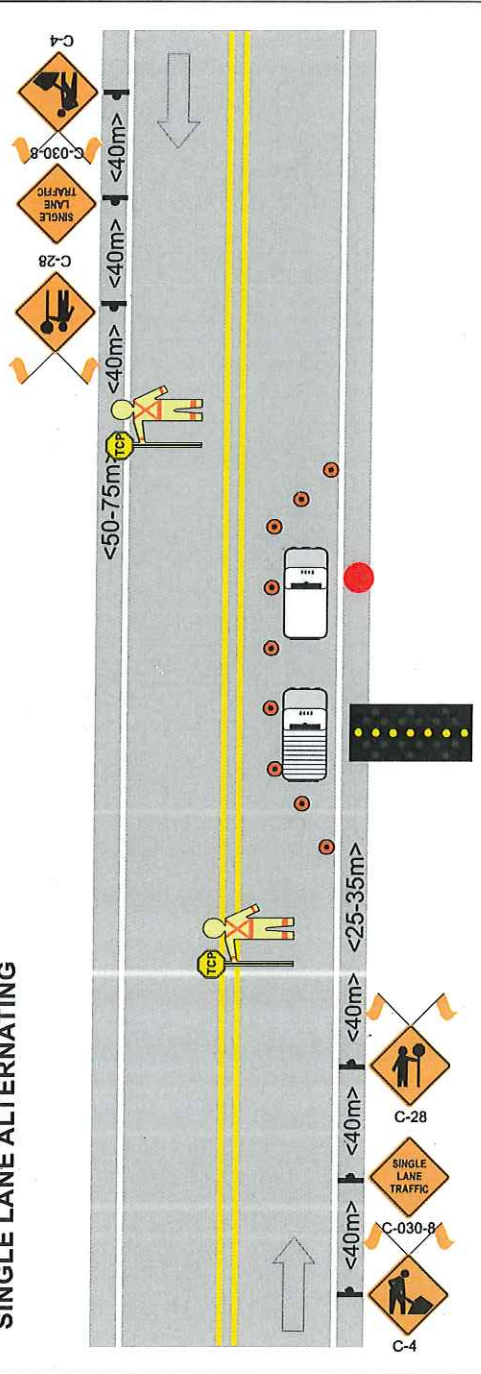


**NOTES:**

1. Description & Location: Work consist of placing aerial cable and access to service vaults.
2. Hours: 9:00am-3:00pm
3. The traffic control will be provided by 2 TCPs and 1 lane closure vehicle with mounted Flashing Arrow Board and any traffic signalling that may be needed.
4. Sign location and spacing will be in conformity with the requirements of the Manual for Work on Roadways as published by the MoTH. Changes to layout of signage may be made by the TCP in charge to accommodate traffic and local conditions on site at the time.
5. Posted speed limit: 50km/hr
6. Signs to be mounted on HLWD.

**NOTE:** This traffic plan is not an order of TCP and equipment. It is the Contractor's responsibility to order the resources required for this plan at least 24 hours prior to the works being performed. Call the contracted traffic control company dispatch to confirm your order.

**SINGLE LANE ALTERNATING**



**TABLE A**  
Positioning of devices on conventional roadways for various speed limits

	50	60	70	80	90-100
Regulatory speed limit km/hr	50	60	70	80	90-100
1a	35	55	75	90	110
1b	5	8	10	12	15
2	10	10	10	10	10
3	30	60	90	120	150
4	40	60	80	100	150

Dimensions shown are in meters and are minimums except for 2'.  
 Dimensions 1a apply to downstream signs, shoulder signs, and to two-way traffic signs on unimproved roads. Dimensions 1b apply to upstream signs, shoulder signs, and to two-way traffic signs on unimproved roads. Dimensions 2, 3, and 4 apply to upstream signs, shoulder signs, and to two-way traffic signs on unimproved roads. Dimensions 5, 6, 7, 8, 9, 10, 11, 12, 13, 14, 15, 16, 17, 18, 19, 20, 21, 22, 23, 24, 25, 26, 27, 28, 29, 30, 31, 32, 33, 34, 35, 36, 37, 38, 39, 40, 41, 42, 43, 44, 45, 46, 47, 48, 49, 50, 51, 52, 53, 54, 55, 56, 57, 58, 59, 60, 61, 62, 63, 64, 65, 66, 67, 68, 69, 70, 71, 72, 73, 74, 75, 76, 77, 78, 79, 80, 81, 82, 83, 84, 85, 86, 87, 88, 89, 90, 91, 92, 93, 94, 95, 96, 97, 98, 99, 100, 101, 102, 103, 104, 105, 106, 107, 108, 109, 110, 111, 112, 113, 114, 115, 116, 117, 118, 119, 120, 121, 122, 123, 124, 125, 126, 127, 128, 129, 130, 131, 132, 133, 134, 135, 136, 137, 138, 139, 140, 141, 142, 143, 144, 145, 146, 147, 148, 149, 150, 151, 152, 153, 154, 155, 156, 157, 158, 159, 160, 161, 162, 163, 164, 165, 166, 167, 168, 169, 170, 171, 172, 173, 174, 175, 176, 177, 178, 179, 180, 181, 182, 183, 184, 185, 186, 187, 188, 189, 190, 191, 192, 193, 194, 195, 196, 197, 198, 199, 200, 201, 202, 203, 204, 205, 206, 207, 208, 209, 210, 211, 212, 213, 214, 215, 216, 217, 218, 219, 220, 221, 222, 223, 224, 225, 226, 227, 228, 229, 230, 231, 232, 233, 234, 235, 236, 237, 238, 239, 240, 241, 242, 243, 244, 245, 246, 247, 248, 249, 250, 251, 252, 253, 254, 255, 256, 257, 258, 259, 260, 261, 262, 263, 264, 265, 266, 267, 268, 269, 270, 271, 272, 273, 274, 275, 276, 277, 278, 279, 280, 281, 282, 283, 284, 285, 286, 287, 288, 289, 290, 291, 292, 293, 294, 295, 296, 297, 298, 299, 300, 301, 302, 303, 304, 305, 306, 307, 308, 309, 310, 311, 312, 313, 314, 315, 316, 317, 318, 319, 320, 321, 322, 323, 324, 325, 326, 327, 328, 329, 330, 331, 332, 333, 334, 335, 336, 337, 338, 339, 340, 341, 342, 343, 344, 345, 346, 347, 348, 349, 350, 351, 352, 353, 354, 355, 356, 357, 358, 359, 360, 361, 362, 363, 364, 365, 366, 367, 368, 369, 370, 371, 372, 373, 374, 375, 376, 377, 378, 379, 380, 381, 382, 383, 384, 385, 386, 387, 388, 389, 390, 391, 392, 393, 394, 395, 396, 397, 398, 399, 400, 401, 402, 403, 404, 405, 406, 407, 408, 409, 410, 411, 412, 413, 414, 415, 416, 417, 418, 419, 420, 421, 422, 423, 424, 425, 426, 427, 428, 429, 430, 431, 432, 433, 434, 435, 436, 437, 438, 439, 440, 441, 442, 443, 444, 445, 446, 447, 448, 449, 450, 451, 452, 453, 454, 455, 456, 457, 458, 459, 460, 461, 462, 463, 464, 465, 466, 467, 468, 469, 470, 471, 472, 473, 474, 475, 476, 477, 478, 479, 480, 481, 482, 483, 484, 485, 486, 487, 488, 489, 490, 491, 492, 493, 494, 495, 496, 497, 498, 499, 500, 501, 502, 503, 504, 505, 506, 507, 508, 509, 510, 511, 512, 513, 514, 515, 516, 517, 518, 519, 520, 521, 522, 523, 524, 525, 526, 527, 528, 529, 530, 531, 532, 533, 534, 535, 536, 537, 538, 539, 540, 541, 542, 543, 544, 545, 546, 547, 548, 549, 550, 551, 552, 553, 554, 555, 556, 557, 558, 559, 560, 561, 562, 563, 564, 565, 566, 567, 568, 569, 570, 571, 572, 573, 574, 575, 576, 577, 578, 579, 580, 581, 582, 583, 584, 585, 586, 587, 588, 589, 590, 591, 592, 593, 594, 595, 596, 597, 598, 599, 600, 601, 602, 603, 604, 605, 606, 607, 608, 609, 610, 611, 612, 613, 614, 615, 616, 617, 618, 619, 620, 621, 622, 623, 624, 625, 626, 627, 628, 629, 630, 631, 632, 633, 634, 635, 636, 637, 638, 639, 640, 641, 642, 643, 644, 645, 646, 647, 648, 649, 650, 651, 652, 653, 654, 655, 656, 657, 658, 659, 660, 661, 662, 663, 664, 665, 666, 667, 668, 669, 670, 671, 672, 673, 674, 675, 676, 677, 678, 679, 680, 681, 682, 683, 684, 685, 686, 687, 688, 689, 690, 691, 692, 693, 694, 695, 696, 697, 698, 699, 700, 701, 702, 703, 704, 705, 706, 707, 708, 709, 710, 711, 712, 713, 714, 715, 716, 717, 718, 719, 720, 721, 722, 723, 724, 725, 726, 727, 728, 729, 730, 731, 732, 733, 734, 735, 736, 737, 738, 739, 740, 741, 742, 743, 744, 745, 746, 747, 748, 749, 750, 751, 752, 753, 754, 755, 756, 757, 758, 759, 760, 761, 762, 763, 764, 765, 766, 767, 768, 769, 770, 771, 772, 773, 774, 775, 776, 777, 778, 779, 780, 781, 782, 783, 784, 785, 786, 787, 788, 789, 790, 791, 792, 793, 794, 795, 796, 797, 798, 799, 800, 801, 802, 803, 804, 805, 806, 807, 808, 809, 810, 811, 812, 813, 814, 815, 816, 817, 818, 819, 820, 821, 822, 823, 824, 825, 826, 827, 828, 829, 830, 831, 832, 833, 834, 835, 836, 837, 838, 839, 840, 841, 842, 843, 844, 845, 846, 847, 848, 849, 850, 851, 852, 853, 854, 855, 856, 857, 858, 859, 860, 861, 862, 863, 864, 865, 866, 867, 868, 869, 870, 871, 872, 873, 874, 875, 876, 877, 878, 879, 880, 881, 882, 883, 884, 885, 886, 887, 888, 889, 890, 891, 892, 893, 894, 895, 896, 897, 898, 899, 900, 901, 902, 903, 904, 905, 906, 907, 908, 909, 910, 911, 912, 913, 914, 915, 916, 917, 918, 919, 920, 921, 922, 923, 924, 925, 926, 927, 928, 929, 930, 931, 932, 933, 934, 935, 936, 937, 938, 939, 940, 941, 942, 943, 944, 945, 946, 947, 948, 949, 950, 951, 952, 953, 954, 955, 956, 957, 958, 959, 960, 961, 962, 963, 964, 965, 966, 967, 968, 969, 970, 971, 972, 973, 974, 975, 976, 977, 978, 979, 980, 981, 982, 983, 984, 985, 986, 987, 988, 989, 990, 991, 992, 993, 994, 995, 996, 997, 998, 999, 1000.

**LEGEND**

- TRAFFIC CONTROL PERSON
- LANE CLOSURE TRUCK
- TRUCK MOUNTED FAB
- TRAFFIC CONE (DELINEATOR) TYPE 'D'
- TRAFFIC SIGN LOCATION
- WORK TRUCK
- WORK LOCATION / LANE CLOSURE



**ANSAN TRAFFIC CONTROL**  
 Ansan Industries Ltd.  
 2000 Viking Way, Richmond,  
 British Columbia V6V 1Y2  
 Tel: (604) 275-1541 Fax: (604) 275-1545  
 Email: plan@ansan.net

<b>CUSTOMER CONTACT:</b>	<b>FOCUS COMMUNICATION (2613910)</b> PARVEEN AGGARWAL: 604-529-1842
<b>DATE:</b>	2016-SEP-19
<b>PLAN #:</b>	<b>PL 16-740</b> NIXON RD & ROWANNA CRSCENT, CHILLIWACK MANHOLE & POLE ACCESS
<b>DWG BY:</b>	CHRISTINE WONG
<b>PAGES:</b>	PG 1

THIS TRAFFIC PLAN HAS BEEN PREPARED BY ANSAN INDUSTRIES LTD. BASED, IN PART, ON INFORMATION PROVIDED BY THIRD PARTIES. EVERY EFFORT HAS BEEN MADE TO ENSURE THAT THE PLAN CONFORMS TO THE REQUIREMENTS OF THE MOTOR VEHICLE ACT (RSBC 1986) CHAPTER 318 AND REGULATIONS AND TO THE BC TRAFFIC CONTROL MANUAL. IMPLEMENTATION OF THIS PLAN WILL BE UNDER THE SUPERVISION OF ANSAN INDUSTRIES LTD. WHO TAKES NO RESPONSIBILITY FOR THE USES TO WHICH THIS PLAN IS PUT BY THIRD PARTIES NOT DIRECTLY UNDER THE SUPERVISION OF ANSAN INDUSTRIES LTD.